



RAY BUILDING GROUP  
COMPANY PROFILE

2019



# Welcome message

**It** is with pleasure that I welcome you to Ray Building Group Co., Ltd. The company focuses on the architecture & design, the construction & renovation, the mechanical & civil engineering, the supplying & installation of electrical network services and the development of real estate in the Kingdom of Cambodia.

Our business is that of a model based on three pillars. The first is a strong belief in the strength of a decentralized management model with a widespread division reach. The second is our obsession with providing our customers with the best possible combination price, quality and time. And the third column, the one without which neither of the first two would exist is an unwavering conviction in the importance of recruiting, developing and retaining the best human talent. Actually, we are a group of companies offering many services at unbeatable qualities. We also give, for Cambodian students who have just completed their studies, the internship opportunities and training in our Company.

We appreciate the time you are taking to share our story with you and welcome to Ray Building Group.

Mrs. Nom Sotheary  
Managing Director



## Vision

To become the world most pioneering for the green planet and to be the most advanced global player for its industry.

## Mission

- To transform Ray Building Group Co., Ltd into the number one choice for quality developments in engineering &

consultancy and hospitality sectors.

- To continually improve our competitive edge through Invention, Suggestion hemes, Motivation and Customer Feed backs.

## Objectives

To respond to marketneeds in the area of upmarket construction by utilizing its local competence for a greater extent.

RBG has therefore decided to follow an ambitious policy based on the development of its human resources, through professional training and internal promotion, and by welcoming new Cambodian trainees each year and by consistently recruiting the best of them.





B.I.C (CAMBODIA) BANK  
 DESIGN&BUILD  
 (Structural Strengthening& Interior Decoration,MEP)  
 Building Area: 525  
 Total Floor area:1575m2



BRED BANK CAMBODIA  
 Construction:Structural Strengthening& Interior lighting,Backstair,louvers  
 Building Area: 1218m2  
 Total Floor area:4872m2

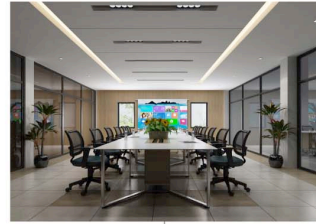
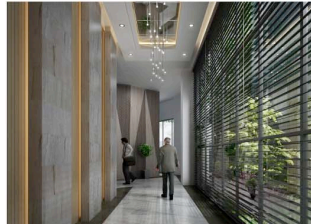
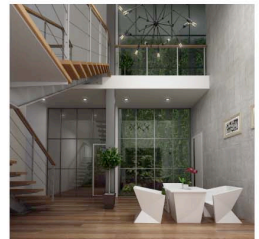


Orchid Kohpich Hospital  
 Design&Build  
 (Structural Strengthening& Interior Decoration,MEP)  
 Building Area: 408m2  
 Total Floor area:3672m2



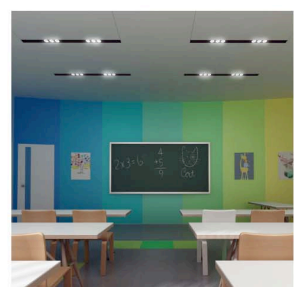
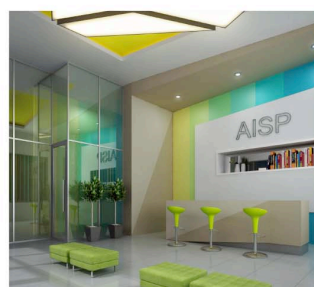
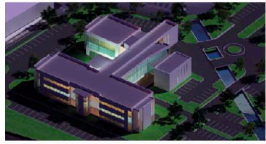


SONAVITH OFFICE



SSCA OFFICE

Location: Phnom Penh  
 Function: Office  
 Size Area: 17,800 sqm  
 Building Area: 2,323 sqm





CAMKO VILLA



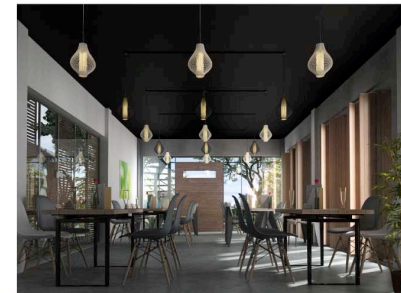
YUKUNTHOR VILLA



CAFE RESTAU

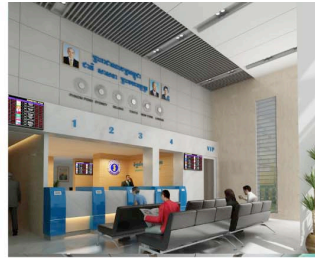


LE GOURMET RESTAURANT





ម៉ូហានករ  
MOHANOKOR



TELA OFFICE-2



3D VIEWS D-A WALL



CTN NEWS CENTERS



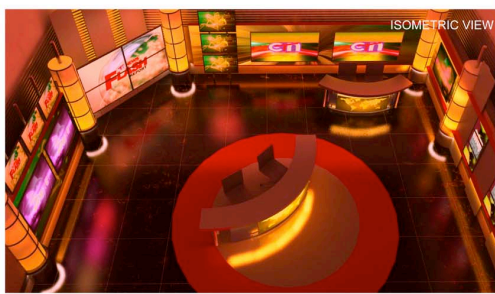
TOULKORK CONDO



PP SERVICE APRTMEN



3D VIEWS A-B WALL



ISOMETRIC VIEW